

AA49



AA49 Triac Adapter

Installer's Specifications

Input Voltage	24VAC, 30VAC max.
Triac Input Current	25mA per input
Outputs	N.O. (closes to GND)
Output Ratings	150Ω closed contact resistance, 125mW max.
Operating Temperature Range	5° to 60°C (41° to 140°F)

QUICK INSTALL

1. Disconnect the EP3 from the power supply.
2. Wire the AA49 to the EP3 as shown.
3. Re-configure the EP3 as indicated: Set the input switch to "Tristate," and set the tri-pull-up jumper to "Off."

NOTICE

- This product is not intended for life or safety applications.
- Do not install this product in hazardous or classified locations.
- Read and understand the instructions before installing this product.
- Turn off all power supplying equipment before working on it.
- The installer is responsible for conformance to all applicable codes.

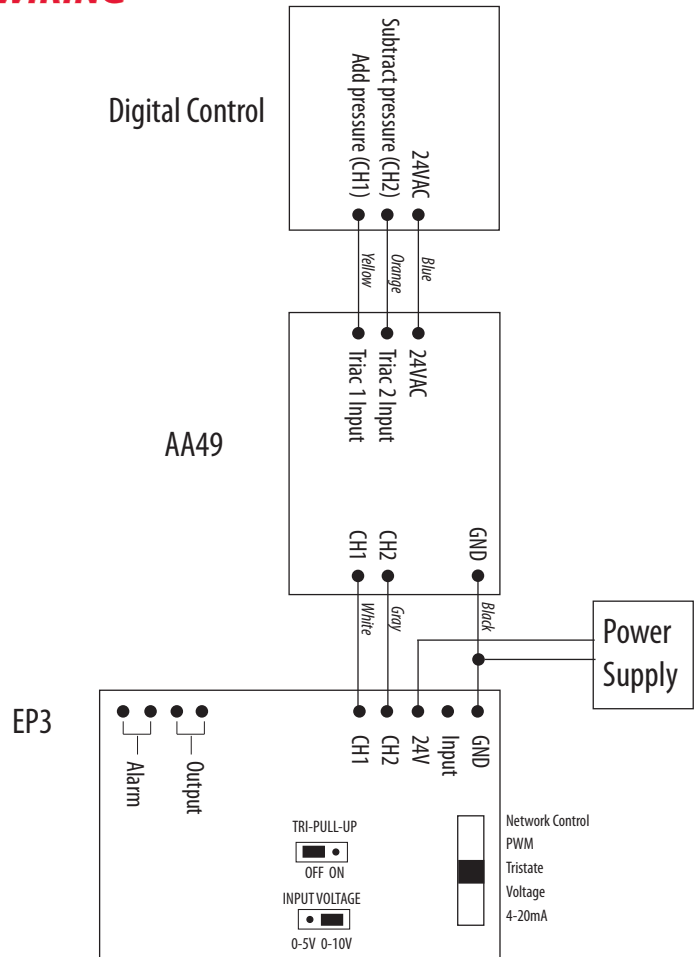
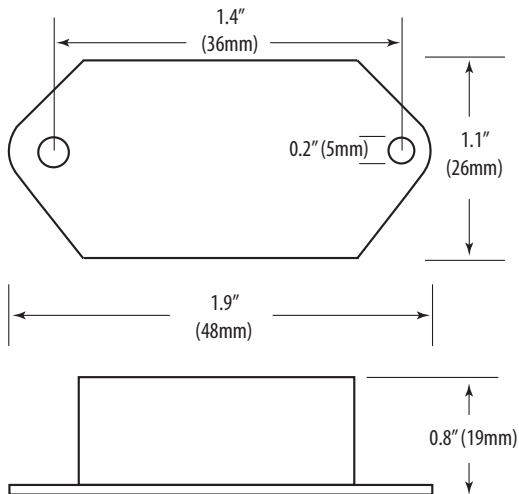
WIRING

PRODUCT IDENTIFICATION

AA49 EP3 Triac Adapter

This device is needed when the EP3 electroneumatic transducer is used with a triac controller output.

DIMENSIONS



Note: Connect only 24VAC to the blue wire.